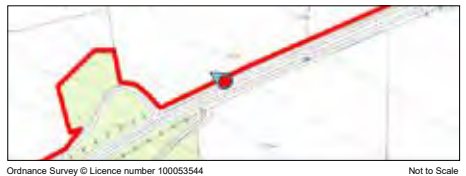




Existing view

VIEWPOINT 1 (left): View north west from A9

Dupplin Solar



Location Plan

OS reference: 305045E 721156N
AGD: 122m
Direction of view: 300°
Nearest solar panel: 95m

Visualisation Type: Type 3
Horizontal field of view: 90° (cylindrical projection)
Vertical field of view: 25°
Enlargement factor: 96% @ A1

Camera: Canon EOS 5DS
Lens: Canon 50mm FFL
Camera height: 1.5m AGL
Date and time: 25/07/2025 14:19



Photomontage at completion

VIEWPOINT 1 (left): View north west from A9

Dupplin Solar



Location Plan

OS reference: 305045E 721156N
AGD: 122m
Direction of view: 300°
Nearest solar panel: 95m

Visualisation Type: Type 3
Horizontal field of view: 90° (cylindrical projection)
Vertical field of view: 25°
Enlargement factor: 96% @ A1

Camera: Canon EOS 5DS
Lens: Canon 50mm FFL
Camera height: 1.5m AGL
Date and time: 25/07/2025 14:19



Existing view

VIEWPOINT 1 (right): View north east

Duplin Solar



Location Plan

OS reference:	305045E 721156N	Visualisation Type:	Type 3	Camera:	Canon EOS 5DS
AOD:	122m	Horizontal field of view:	90° (cylindrical projection)	Lens:	Canon 50mm FFL
Direction of view:	30°	Vertical field of view:	25°	Camera height:	1.5m AGL
Nearest solar panel:	95m	Enlargement factor:	96% @ A1	Date and time:	25/07/2025 14:19



Photomontage at completion

VIEWPOINT 1 (right): View north east

Duplin Solar

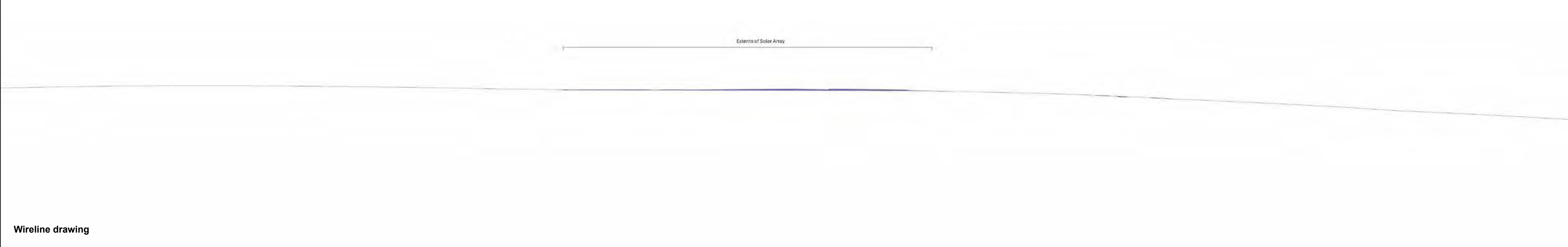


Location Plan

OS reference:	305045E 721156N	Visualisation Type:	Type 3	Camera:	Canon EOS 5DS
AOD:	122m	Horizontal field of view:	90° (cylindrical projection)	Lens:	Canon 50mm FFL
Direction of view:	30°	Vertical field of view:	25°	Camera height:	1.5m AGL
Nearest solar panel:	95m	Enlargement factor:	96% @ A1	Date and time:	25/07/2025 14:19

Baseline photograph

This image provides landscape and visual context only



Wireline drawing

VIEWPOINT 4: View south west from Tibbermore

Dupplin Solar



Location Plan

OS reference:	305038E 723670N	Visualisation Type:	Type 3	Camera:	Canon EOS 5DS
AGD:	48m	Horizontal field of view:	90° (cylindrical projection)	Lens:	Canon 50mm FFL
Direction of view:	202°	Vertical field of view:	14.2°	Camera height:	1.5m AGL
Nearest solar panel:	1534m	Enlargement factor:	96% @ A1	Date and time:	25/07/2025 11:56



Wireline overlay

VIEWPOINT 4: View south west from Tibbermore

Dupplin Solar



Location Plan

OS reference:	305038E 723670N	Visualisation Type:	Type 3	Camera:	Canon EOS 5DS
AGD:	48m	Horizontal field of view:	90° (cylindrical projection)	Lens:	Canon 50mm FFL
Direction of view:	202°	Vertical field of view:	14.2°	Camera height:	1.5m AGL
Nearest solar panel:	1534m	Enlargement factor:	96% @ A1	Date and time:	25/07/2025 11:56

Baseline photograph

This image provides landscape and visual context only

Wireline drawing

VIEWPOINT 5: View south from Gloagburn Farm Shop

Dupplin Solar



Location Plan

OS reference: 304686E 723650N
AQD: 51m
Direction of view: 200°
Nearest solar panel: 1514m

Visualisation Type: Type 3
Horizontal field of view: 90° (cylindrical projection)
Vertical field of view: 14.2°
Enlargement factor: 96% @ A1

Camera: Canon EOS 5DS
Lens: Canon 50mm FFL
Camera height: 1.5m AGL
Date and time: 25/07/2025 12:10

Wireline overlay

VIEWPOINT 5: View south from Gloagburn Farm Shop

Dupplin Solar



Location Plan

OS reference: 304686E 723650N
AQD: 51m
Direction of view: 200°
Nearest solar panel: 1514m

Visualisation Type: Type 3
Horizontal field of view: 90° (cylindrical projection)
Vertical field of view: 14.2°
Enlargement factor: 96% @ A1

Camera: Canon EOS 5DS
Lens: Canon 50mm FFL
Camera height: 1.5m AGL
Date and time: 25/07/2025 12:10

Baseline photograph

This image provides landscape and visual context only

Wireline drawing

VIEWPOINT 6: View south east from Methven (College Road)

Dupplin Solar



Location Plan

OS reference:	302112E 726198N	Visualisation Type:	Type 3	Camera:	Canon EOS 5DS
ACD:	100m	Horizontal field of view:	90° (cylindrical projection)	Lens:	Canon 50mm FFL
Direction of view:	149°	Vertical field of view:	14.2°	Camera height:	1.5m AGL
Nearest solar panel:	4605m	Enlargement factor:	96% @ A1	Date and time:	25/07/2025 11:22

Wireline overlay

VIEWPOINT 6: View south east from Methven (College Road)

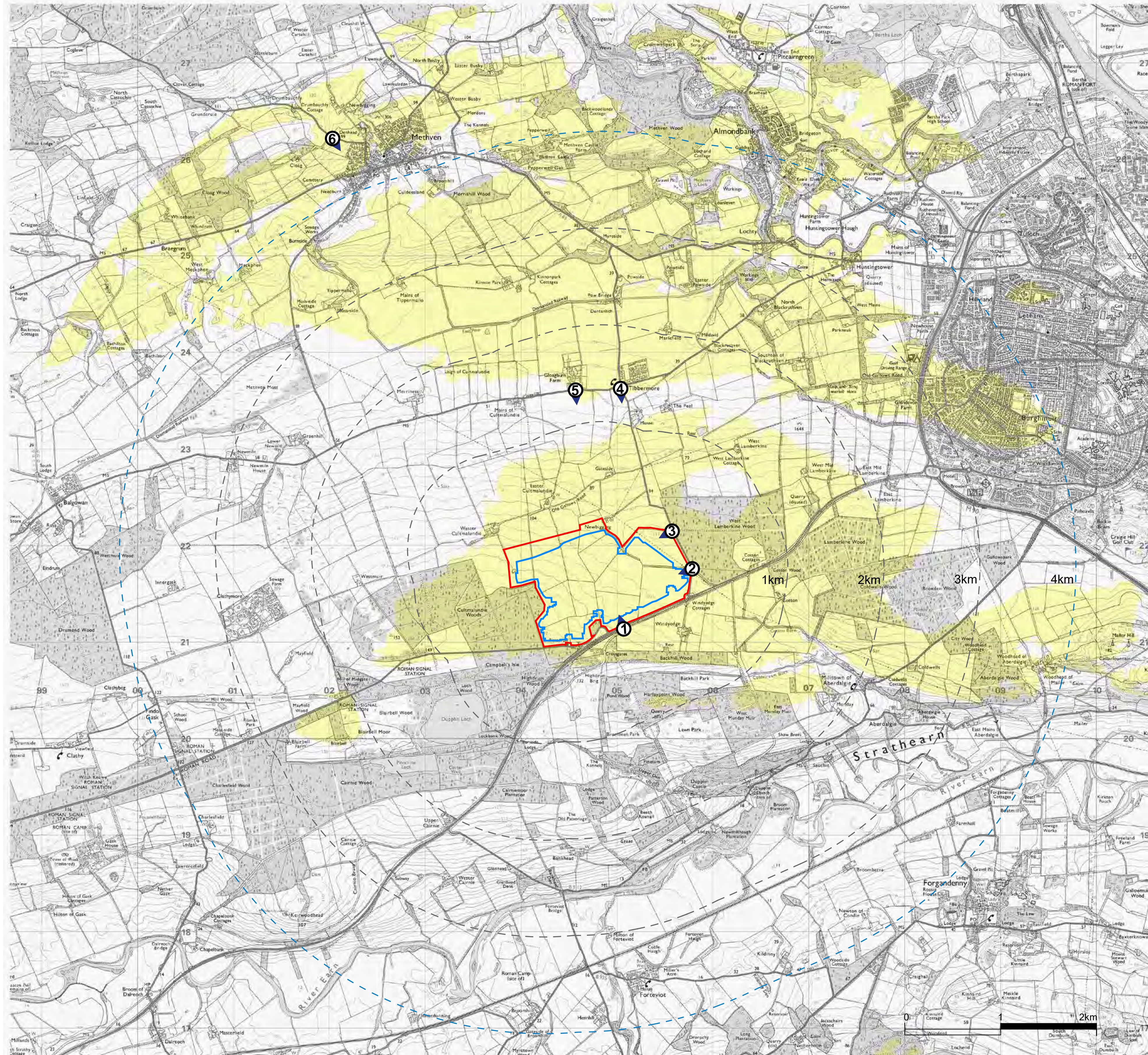
Dupplin Solar



Location Plan

OS reference:	302112E 726198N	Visualisation Type:	Type 3	Camera:	Canon EOS 5DS
ACD:	100m	Horizontal field of view:	90° (cylindrical projection)	Lens:	Canon 50mm FFL
Direction of view:	149°	Vertical field of view:	14.2°	Camera height:	1.5m AGL
Nearest solar panel:	4605m	Enlargement factor:	96% @ A1	Date and time:	25/07/2025 11:22





LEGEND

- Site Boundary
- Solar Panel Layout Boundary
- 4 km Study Area
- Predicted Visibility

1 Viewpoints

1. View north west from A9.
2. View north west from minor road near Windyedge Cottages
3. View west from minor road
4. View south west from Tibberrone
5. View south from Gloagburn Farm Shop
6. View south east from College Road near Methven

Notes:

The calculations of this map are based on the 'bare earth' model of the landform and do not allow for any effects of cxscreening from obstacles such as buildings and existing vegetation. The landform data was taken from Ordnance Survey Terrain 5 digital terrain model (gridded height data at 5m intervals).

DRAFT 11/11/2025

Figure Data:

This figure has been based on the following height data:

Solar Panel Units: 2.66 m

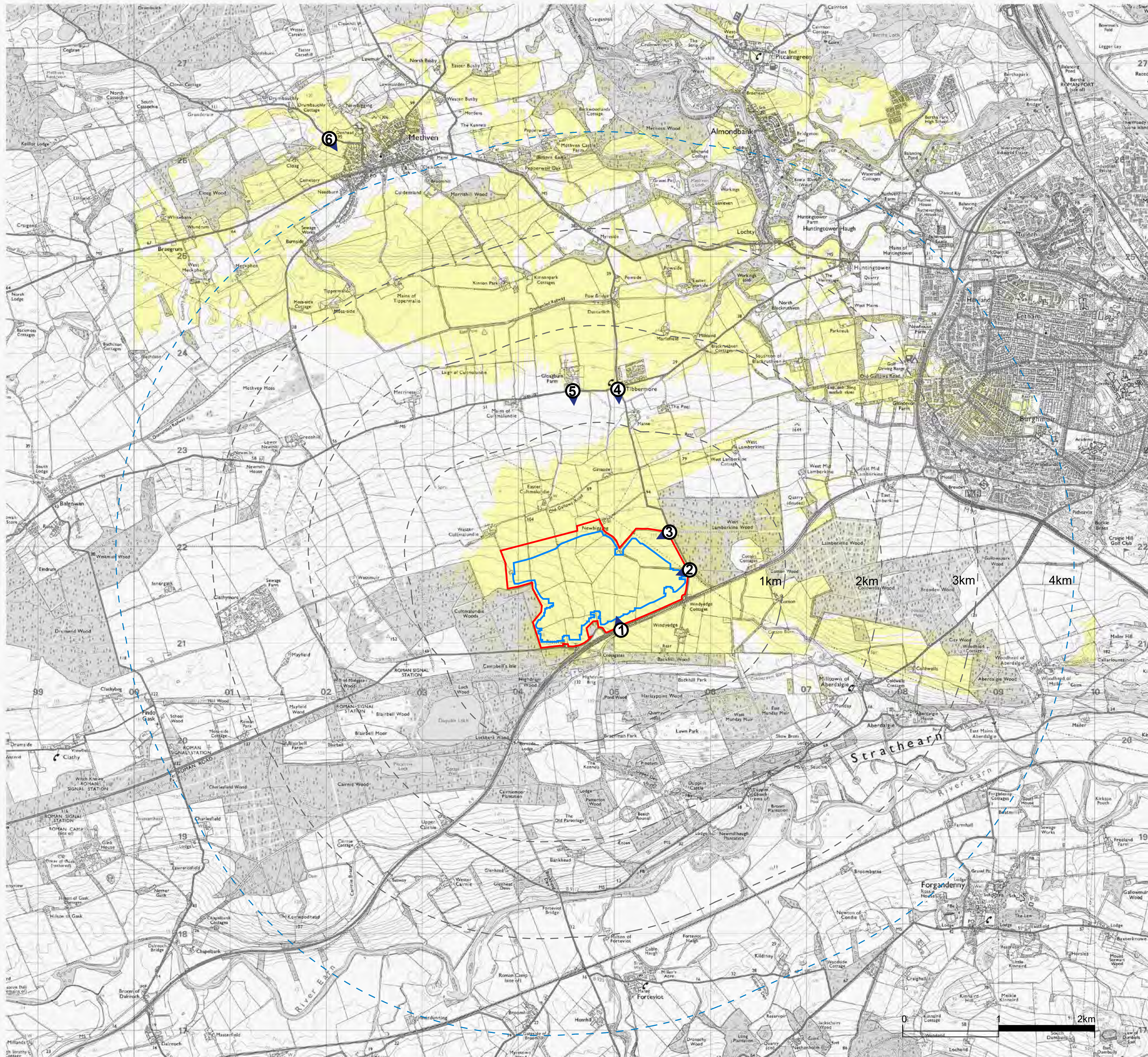


**DUPLIN SOLAR
LVIA REPORT
ZONE OF THEORETICAL VISIBILITY (ZTV)
WITH VIEWPOINTS**

FIGURE 1a

Scale 1:40 000 @ A3

Date NOVEMBER 2025



LEGEND

- Site Boundary
- Solar Panel Layout Boundary
- 4 km Study Area
- Predicted Visibility

1 Viewpoints

1. View north west from A9.
2. View north west from minor road near Windyedge Cottages
3. View west from minor road
4. View south west from Tibberrone
5. View south from Gloagburn Farm Shop
6. View south east from College Road near Methven

Notes:

The calculations of this map incorporate the potential screening influence of buildings and existing vegetation based on the highest resolution terrain elevation data. The landform data was taken from Photography Derived 2m Digital Surface Model (gridded height data at 2m intervals).

DRAFT 11/11/2025

Figure Data:

This figure has been based on the following height data:

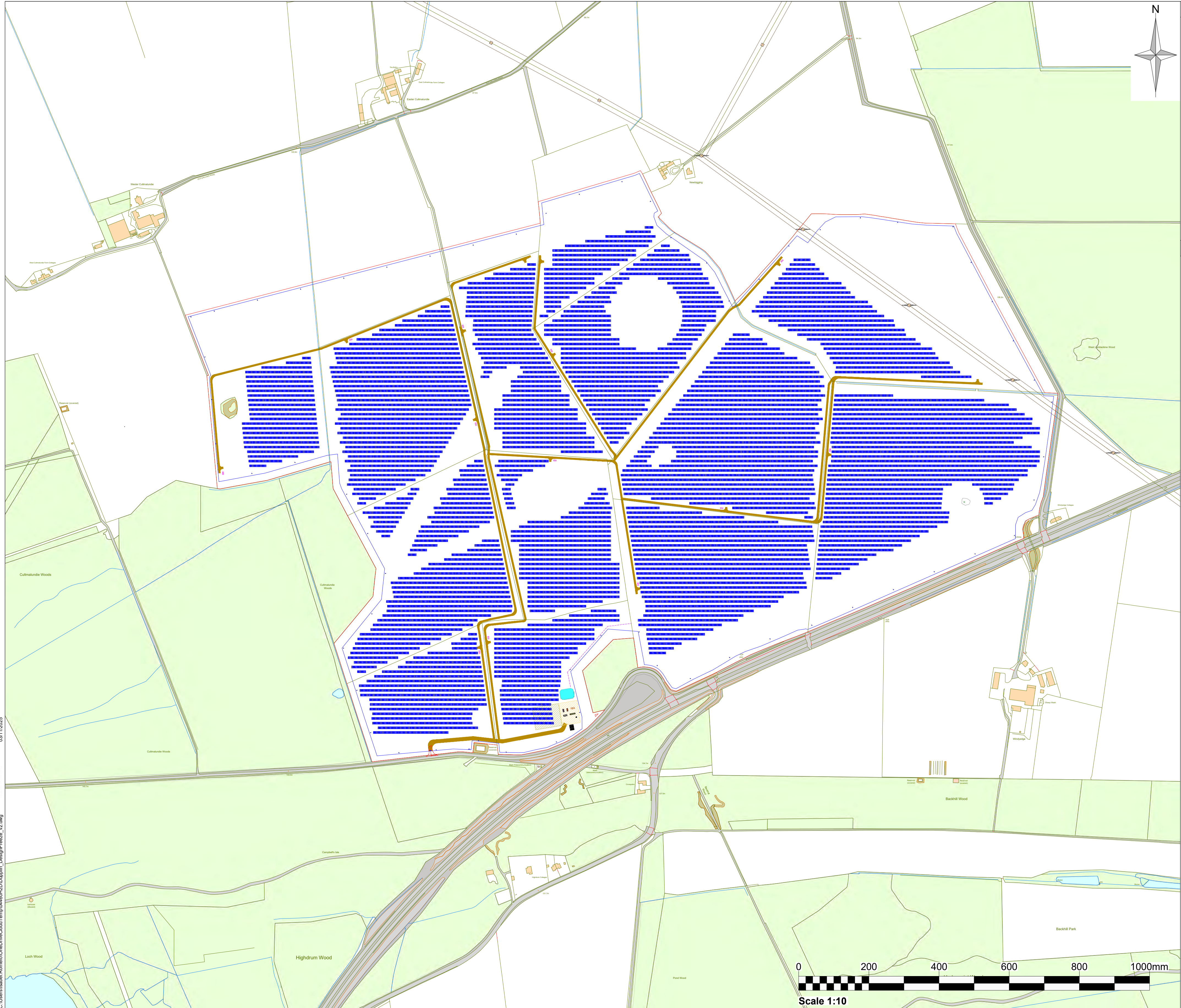
Solar Panel Units: 2.66 m



DUPLIN SOLAR
LVIA REPORT
ZONE OF THEORETICAL VISIBILITY
WITH EXISTING SCREENING
AND VIEWPOINTS

FIGURE 1b

Scale 1:40 000 @ A3 Date NOVEMBER 2025



Notes:

1. Development Area: 165.2 Ha
2. Installed Capacity: 97.8 MWp
3. System TIC: 75 MVA
4. Trina Solar TSM-NEG21C.20 - 760Wp
5. Modules: 128,688
6. Inverters: 189
7. Tx: 12
8. Tilt Angle: 20°
9. Azimuth: 0°
10. Orientation: 2 in Portrait

Legend:

- Site boundary
- Solar fence
- PV modules
- Gate
- Internal tracks
- Transformer station
- Drainage pipe
- SuDS basin

06	SEPA flood areas input	03/11/25	IR	AA	EQ
05	Access update	28/10/25	IR	AA	EQ
04	RLB and constraints update	14/10/25	IR	AA	EQ
03	Additional constraints and SuDS	08/10/25	IR	AA	EQ
02	Site layout with constraints	30/07/25	IR	AA	EQ
01	Initial/Preliminary Issue	23/05/25	IR	AA	EQ
Rev	Amendments	Date	By	Chk	Auth

SLR

www.slrconsulting.com

Drawing Status & Suitability Code

PLANNING

Client

Trio Power Ltd.

Project

Dupplin Solar

Drawing Title

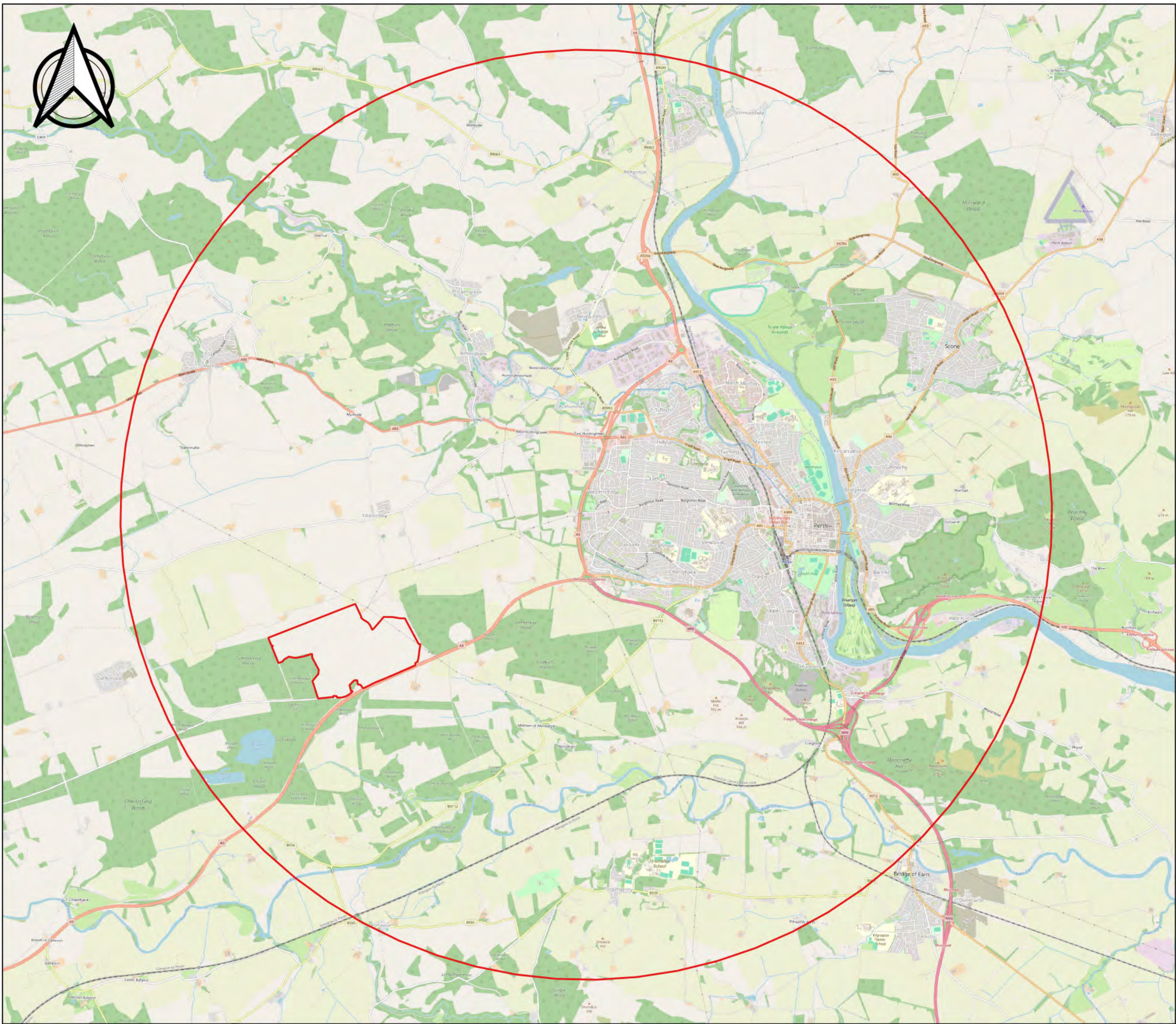
Site Layout

Scale	1:10	@ A3	SLR Project No.	405.065787.00001				
Designed	N/A	Drawn	IR	Checked	AA	Authorised	EQ	
Date	N/A	Date	03/11/2025	Date	30/07/2025	Date	03/11/2025	
Drawing Number	065787-SLR-XX-XX-D-EA-000001						Rev.	06

03/11/2025

C:\Users\laiae.Bonem\OneDrive\CloudTemp\04464646\CD\Dupplin_Design\Freeze_v2.dwg

Site constraints

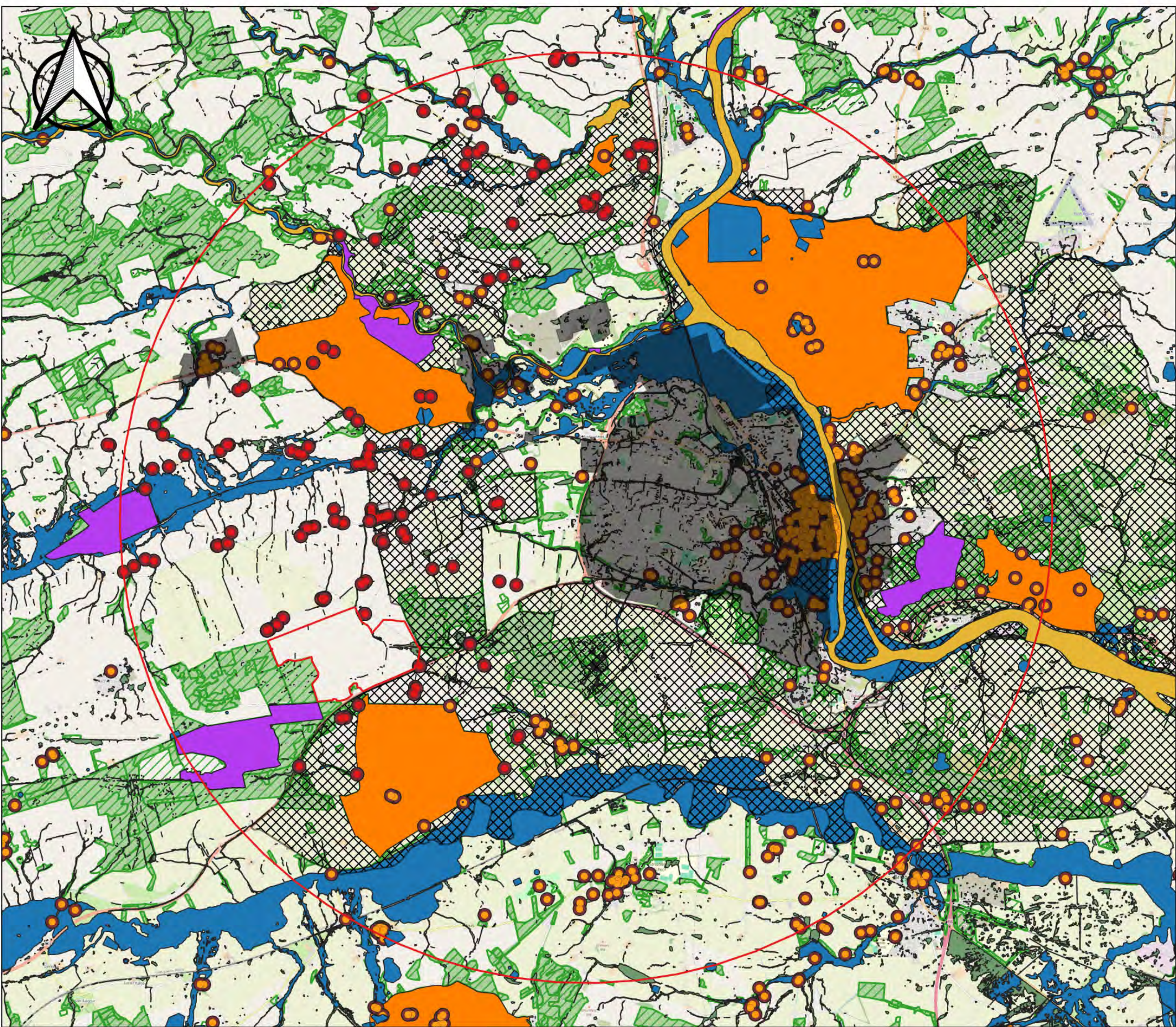


DUPPLIN SOLAR PROJECT

CONSTRAINTS MAP

- Legend**
- Dupplin Constraints Option Area
 - 7km Dupplin Grid Area
 - Forestry**
 - Forestry
 - Flooding**
 - SEPA - Possible River Flooding
 - SEPA - Possible Surface Water Flooding
 - Perth Green Belt**
 - Green Belt
 - Cultural Heritage**
 - Listed Buildings
 - Listed Buildings 100M Buffer
 - Scheduled Ancient Monuments
 - Garden & Designed Landscapes
 - Environmental & Protected Areas**
 - Sites of Special Scientific Interest
 - Special Areas of Conservation
 - Special Protection Areas
 - RAMSAR
 - Residential Properties**
 - Residential Properties
 - Residential Properties 100m Buffer
 - Urban & Industrial Areas

Drawing Ref: Dupplin Constraints Base Map_JSN_20251120
Background mapping is © Crown copyright & database rights.
All rights reserved, 2025, Licence number 0100031673



DUPPLIN SOLAR PROJECT

CONSTRAINTS MAP

- Legend**
- Dupplin Constraints Option Area
 - 7km Dupplin Grid Area
 - Forestry**
 - Forestry
 - Flooding**
 - SEPA - Possible River Flooding
 - SEPA - Possible Surface Water Flooding
 - Perth Green Belt**
 - Green Belt
 - Cultural Heritage**
 - Listed Buildings
 - Listed Buildings 100M Buffer
 - Scheduled Ancient Monuments
 - Garden & Designed Landscapes
 - Environmental & Protected Areas**
 - Sites of Special Scientific Interest
 - Special Areas of Conservation
 - Special Protection Areas
 - RAMSAR
 - Residential Properties**
 - Residential Properties
 - Residential Properties 100m Buffer
 - Urban & Industrial Areas

Drawing Ref: Dupplin Constraints Map_JSN_20251120
Background mapping is © Crown copyright & database rights.
All rights reserved, 2025, Licence number 0100031673