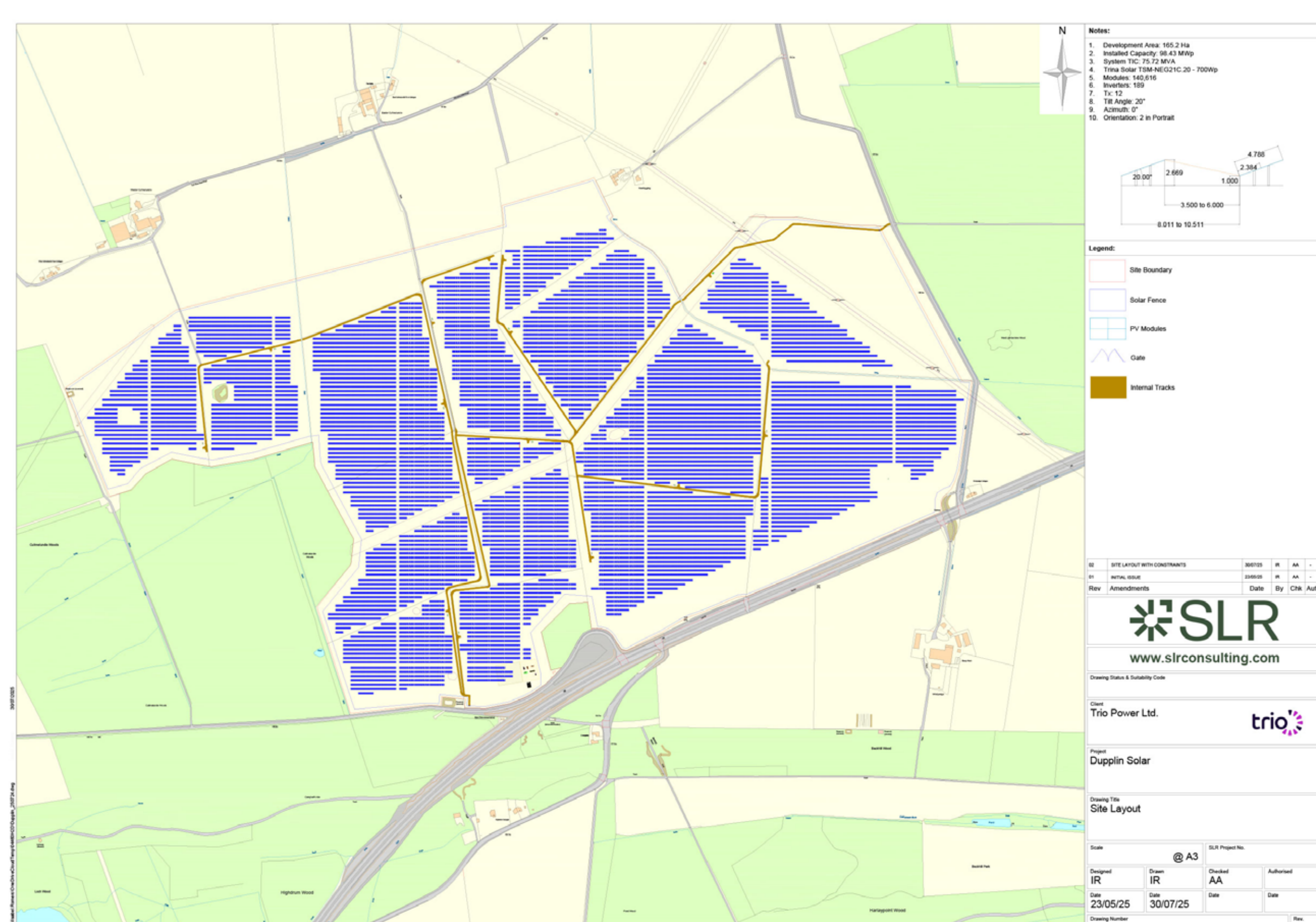


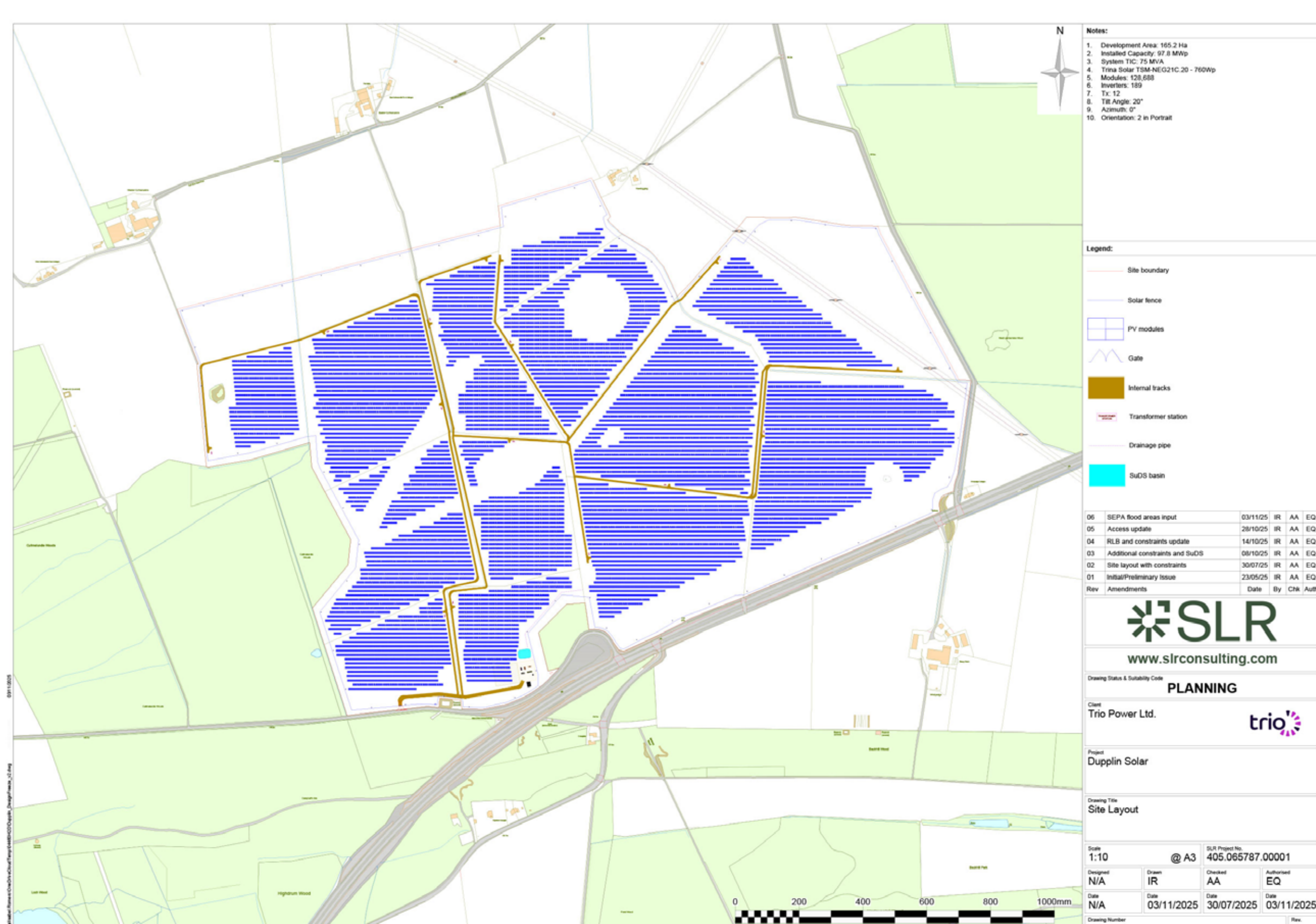
Updated layout

We have made significant changes to the proposed layout of Dupplin Solar Farm in response to feedback from the local community, statutory consultees and the results of surveys and assessments.

We have altered the layout so that the solar farm has a minimal impact on the local neighbourhood and environment, while ensuring the development remains viable.

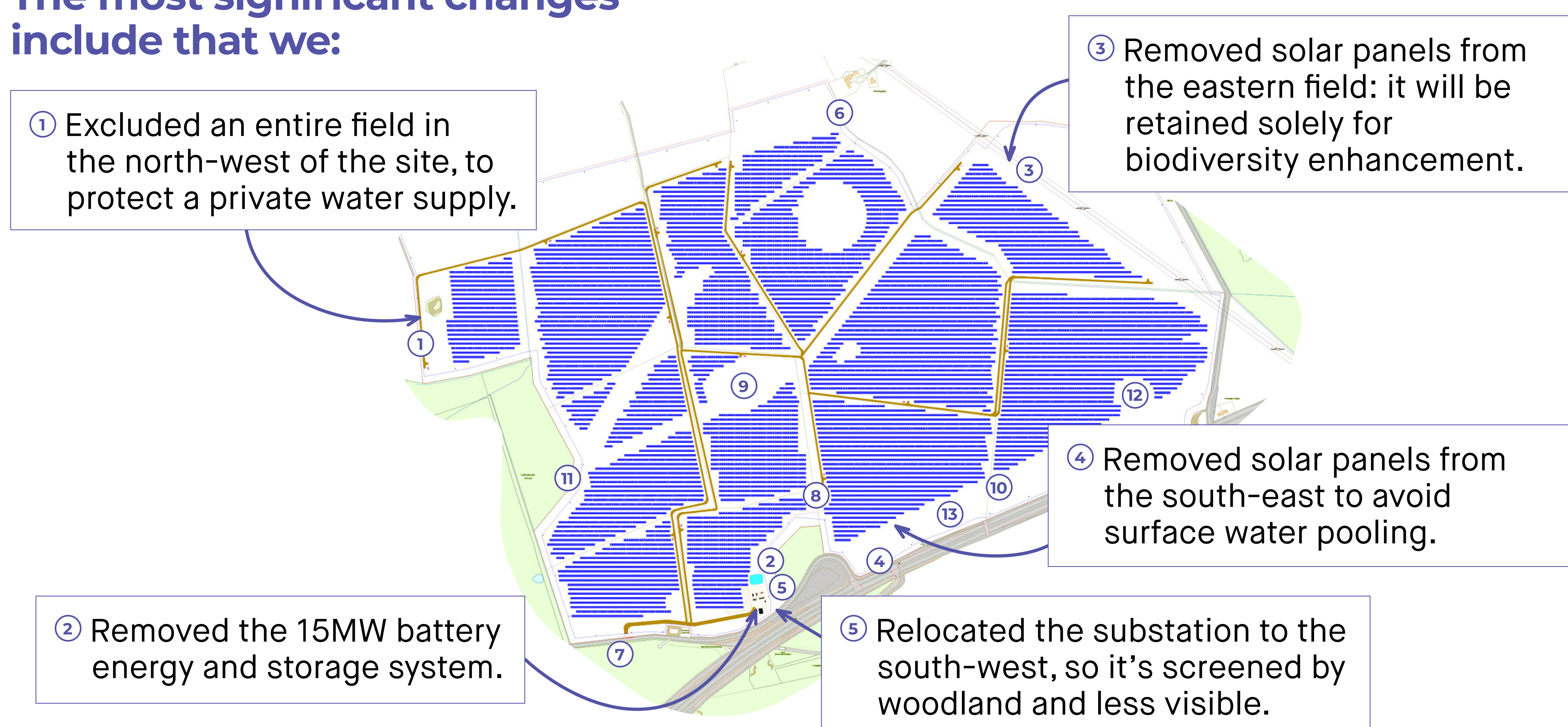


ORIGINAL SITE LAYOUT



NEW SITE LAYOUT

The most significant changes include that we:



We've also refined the design by...

- ⑥ Adding buffers around Dupplin Estate properties, to ensure a substantial distance between the properties and the infrastructure elements of the site.
- ⑦ Moving the site's access west to avoid a Scottish Water pipe.
- ⑧ Adding a shallow drainage channel to let water flow across the land at a controlled, greenfield rate, to prevent surface water pooling in the south east.
- ⑨ Applying buffers around the undesignated post-medieval and Roman heritage assets that lie within the red line boundary.

And we've improved how we'll protect the site's ecology and biodiversity by...

- ⑩ Creating a native-planted visual buffer along the A9, in place of the 100m southern standoff strip.
- ⑪ Applying buffers to protect bats, birds and sensitive habitats, including Ancient Woodland at Cultmalundie.
- ⑫ Adding a 15m buffer from individual trees, in addition to the 30m woodland standoff, near the eastern pylons, to prevent overshadowing.
- ⑬ Establishing a 30m development-free corridor around the site to establish ecological connectivity between Cultmalundie and East Lamberkine woodlands.

If you have any comments or questions about any aspect of the project please talk to a member of the project team or visit our website.

