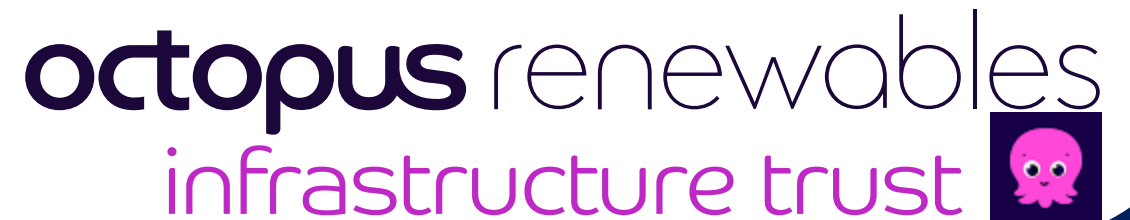
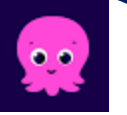


Kirknewton Solar and BESS Farm

Presentation to Community Council

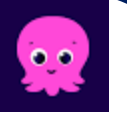
14 October 2025





Agenda

1. Project Information
2. Location
3. Project Design
4. Updated Design
5. Updated Layout
6. Buffers from Newlands
7. Landscape Mitigation Plan
8. Community Engagement
9. Next steps
10. Q&A

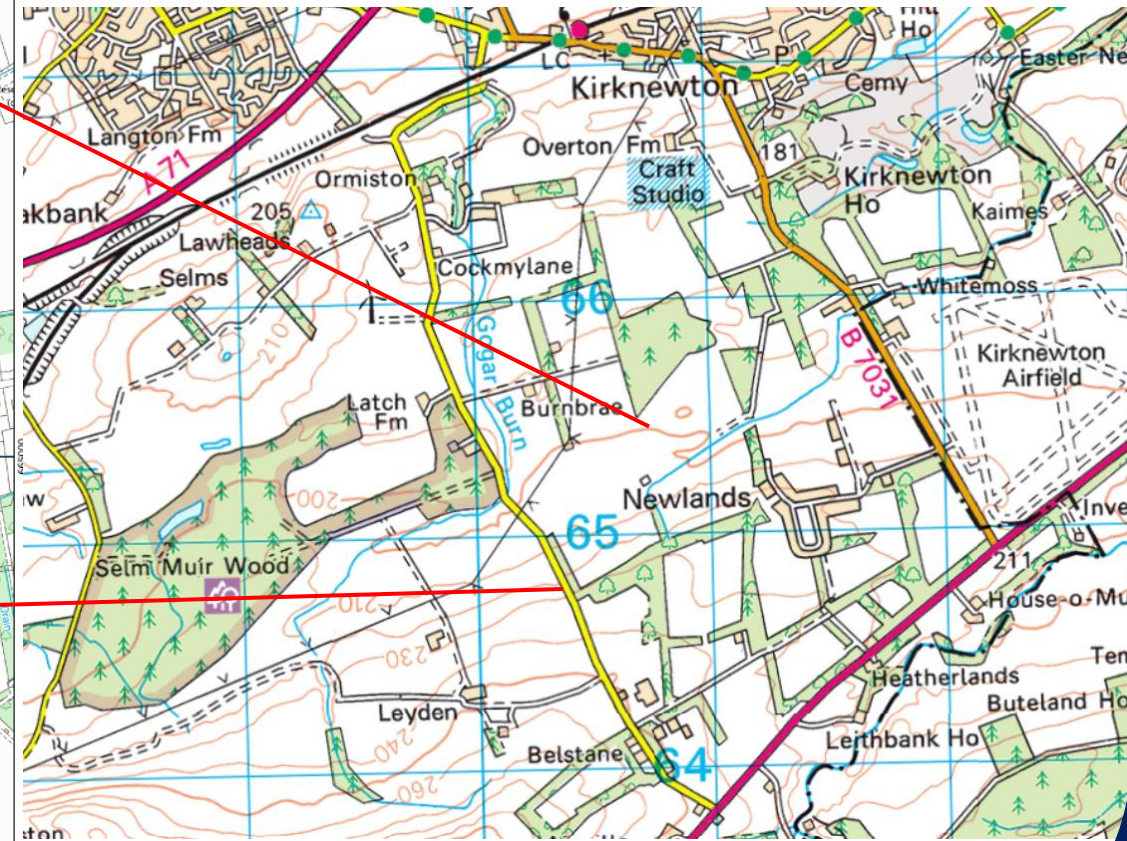
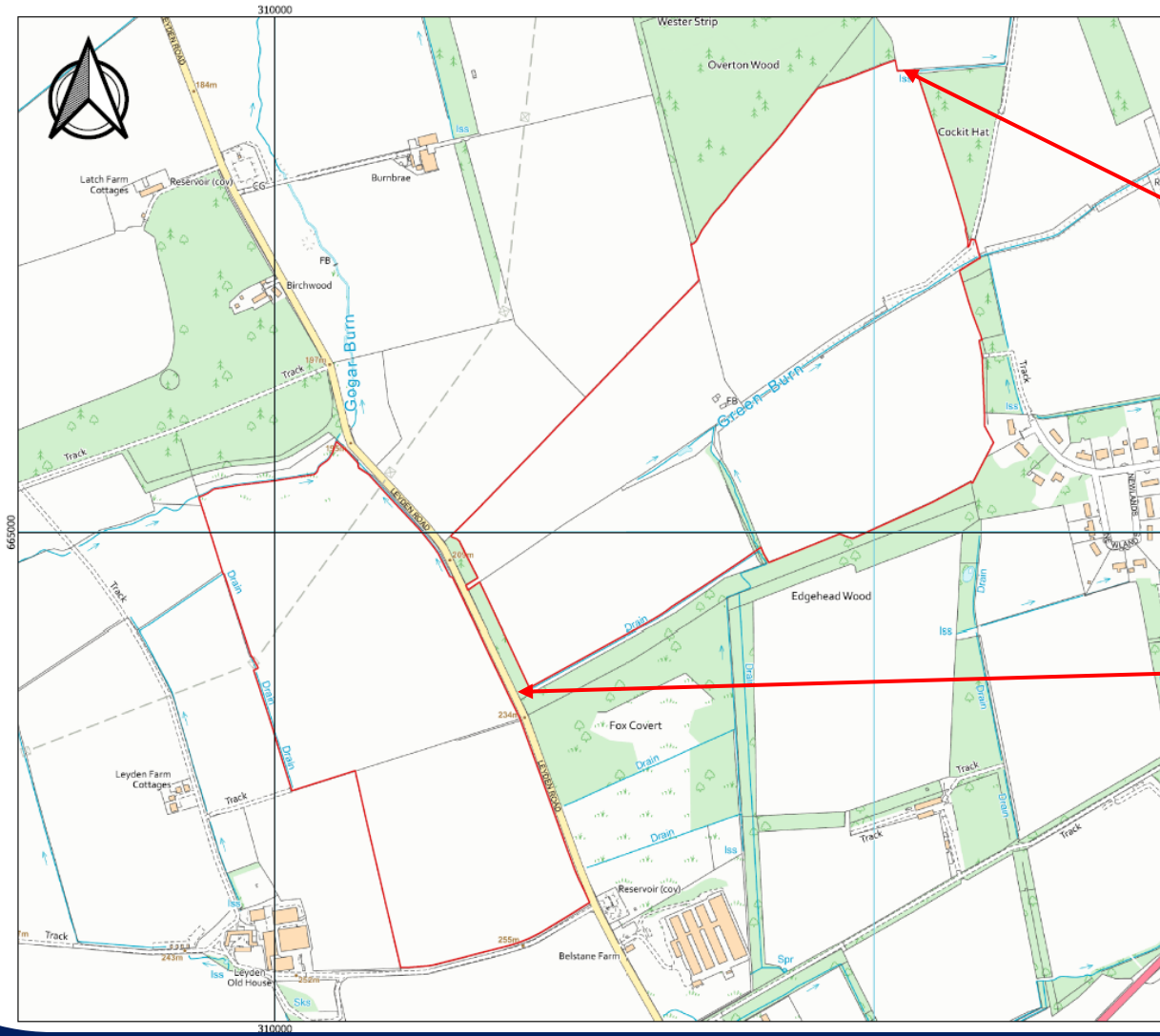


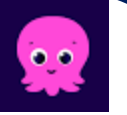
Project Information

- 40MW Solar, 9MW Battery grid connection to Currie GSP
- c51k MWh generation or c51m units of electricity each year (equivalent to annual electricity needs of 18,888 houses-Livingston-19,000 in 2022 Census)
- Current design based on 760w panels and 2MWh battery
- Application will go to the West Lothian Council as under 50MW
- WLC has requested EIA (c 2week delay)



Project Location



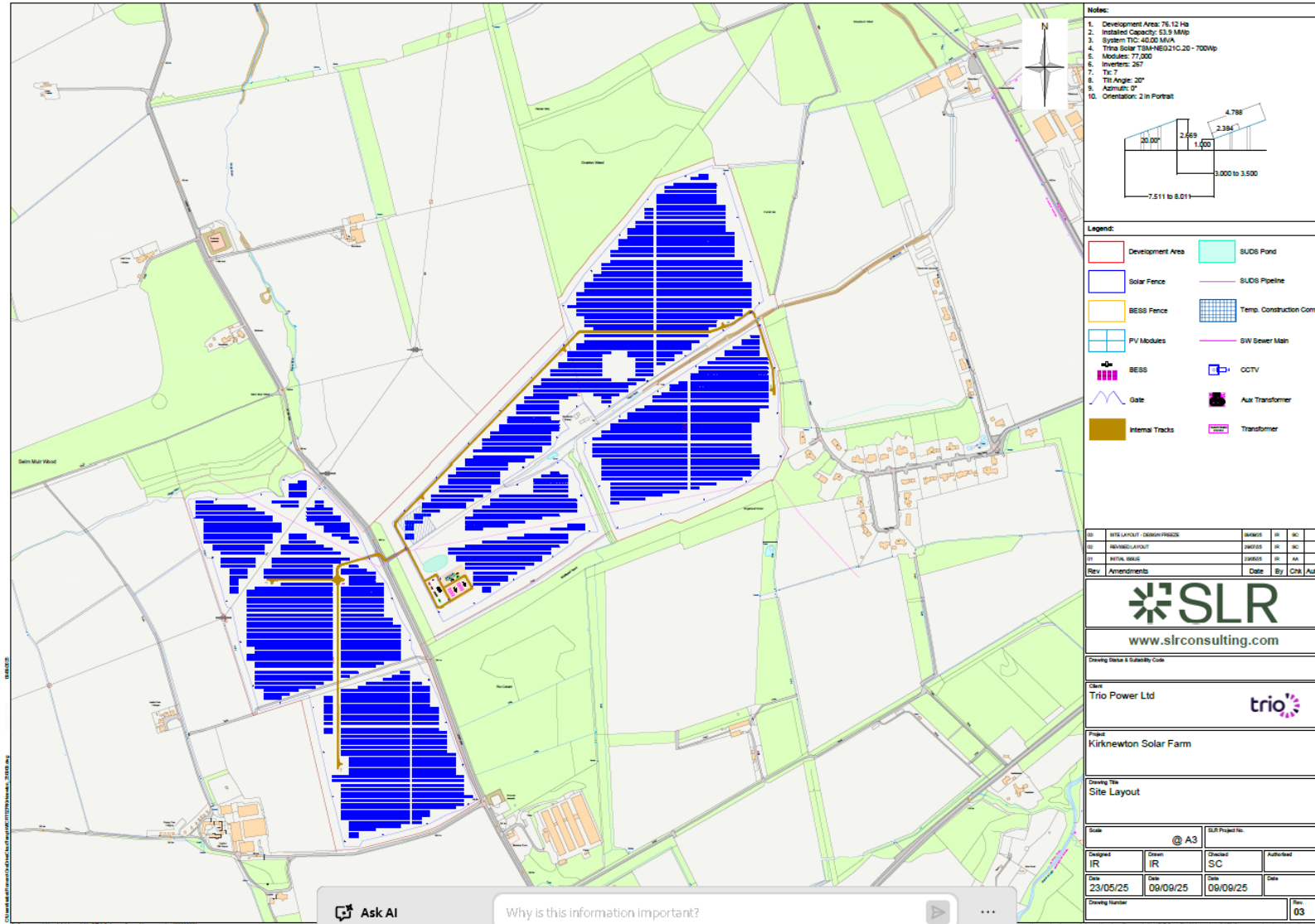


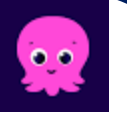
Starting Project Design





Updated Design



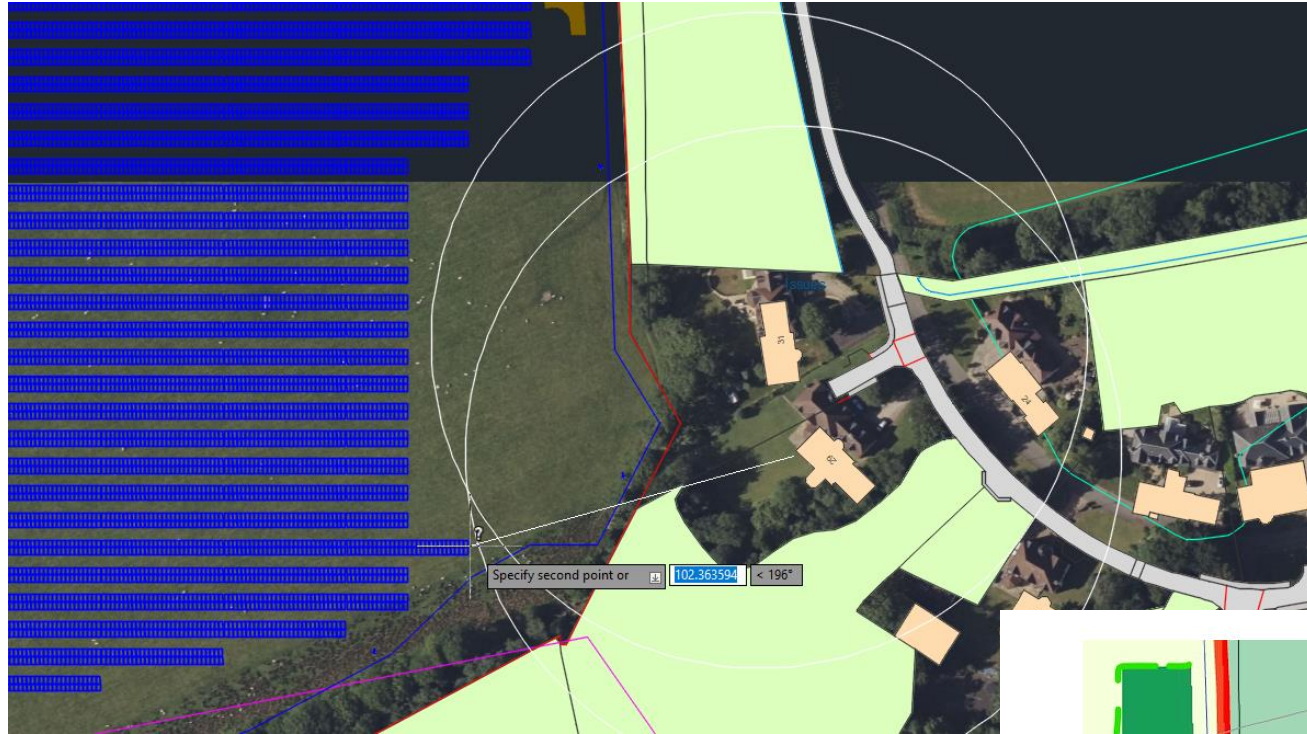


Updated layout

- 10m Stand Off from Scottish Water main
- Moved Bess slightly North to allow 50m buffer from watercourse
- Increased buffer between panels and Newlands properties
- New hedgerows and trees in North & West
- Amended fence line on East to ensure space for walking route

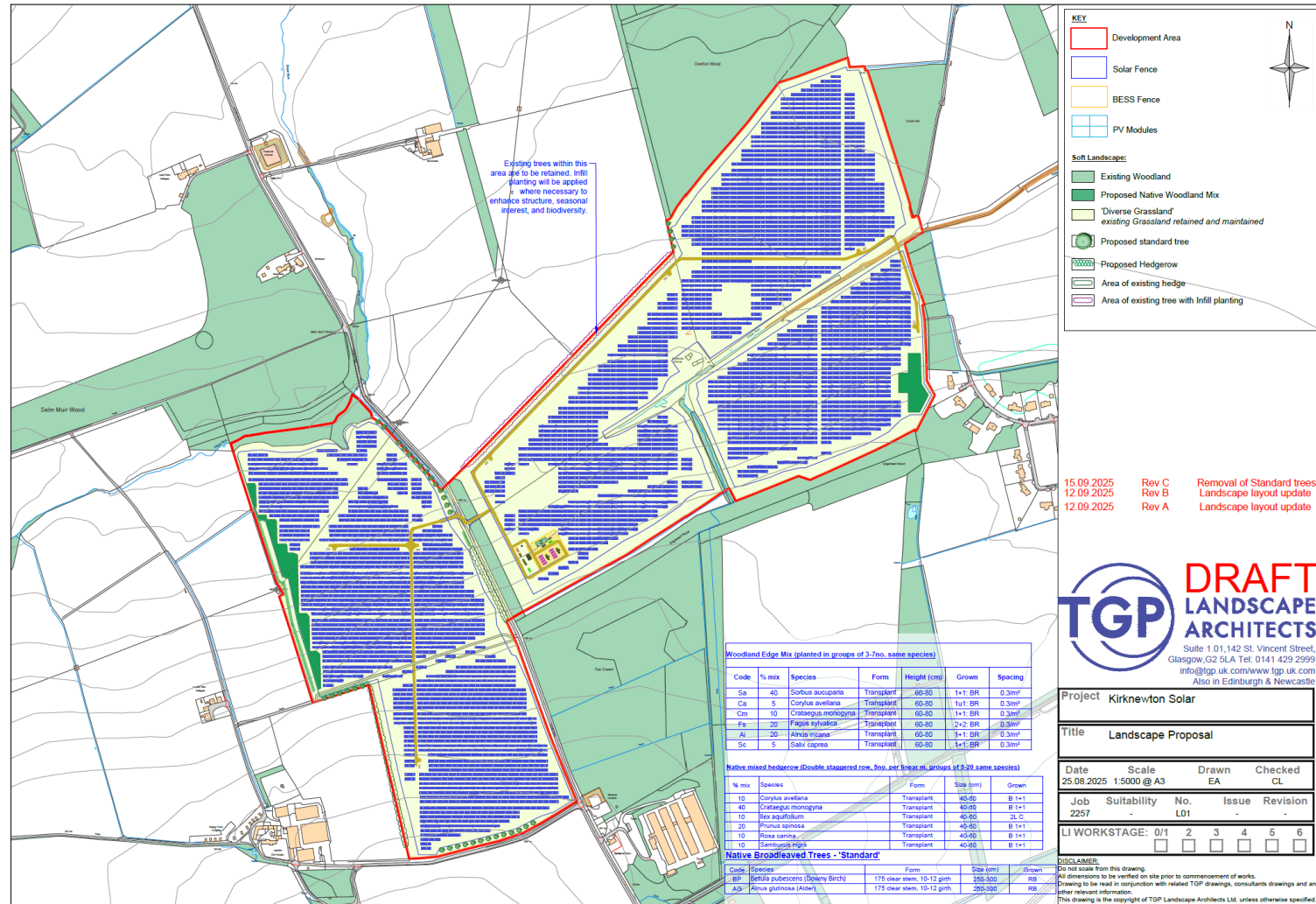


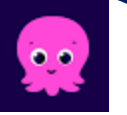
Buffers from Newlands





Landscape Mitigation Plan

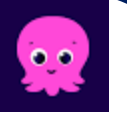




Community Engagement

- Feedback so far
 - 1st Exhibition
 - 40 attended & registered (186 invited by post)
 - 5 feedback forms returned
 - 4 emails received (including 1 from MSP). All replied to. One wanting to lodge objection- Newlands resident
 - On-line presentation – 10 registered and joined

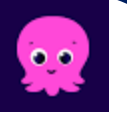
Exh. 1 Feedback Question	Do you support use of Renewable Energy in Scotland?	Are you supportive of our proposal for the Kirknewton Solar & BESS in principle?
	Yes - 5	Very Supportive - 3
	No - 0	Supportive - 1
	Neutral - 0	Neutral - 1
		Opposed -0
		Very Opposed -0



Community Engagement

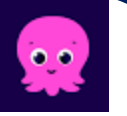
- Feedback so far
2nd Exhibition
 - 34 attended & registered (186 invited by post)
 - 5 feedback forms returned
 - 1 emails received & replied to.
 - On-line presentation – 7 registered
3 attended

Exh. 2 Feedback Question	Do you support use of Renewable Energy in Scotland?	Are you supportive of our proposal for the Kirknewton Solar & BESS in principle?
	Yes - 4	Very Supportive - 0
	No - 0	Supportive - 4
	Neutral - 1	Neutral - 1
		Opposed- 0
		Very Opposed -0

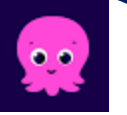


Next Steps

- Report back to Community Council
- Submit Planning Application end Oct/ early Nov 2025
- Grid Reform feedback Q1 2026
- 2029 Construction starts
- 2030 Current Grid connection date



Questions & Answers



Thank you

BLC Energy Ltd

www.blcenergy.com

info@blcenergy.com

Tel: 0131 3804985