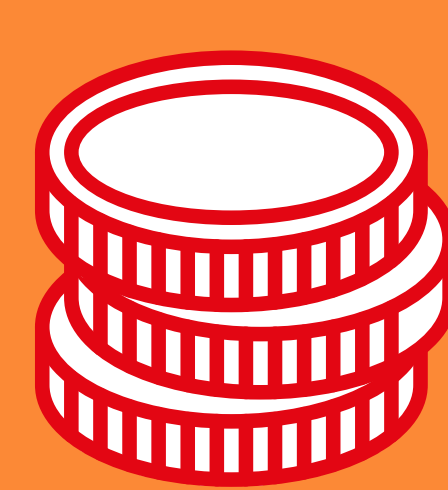


Community benefit fund

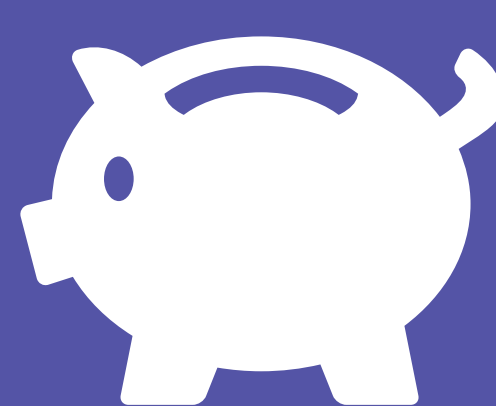
Kirknewton Solar and BESS Farm will generate an annual community benefit fund worth £500 for every megawatt (MW) of export capacity on site.

This equates to £20,000 per annum for the 40-year project life, to be split between local initiatives and grants to local households.

We would like to work with Kirknewton Community Council and Kirknewton Community Development Trust to decide how best to distribute the fund.



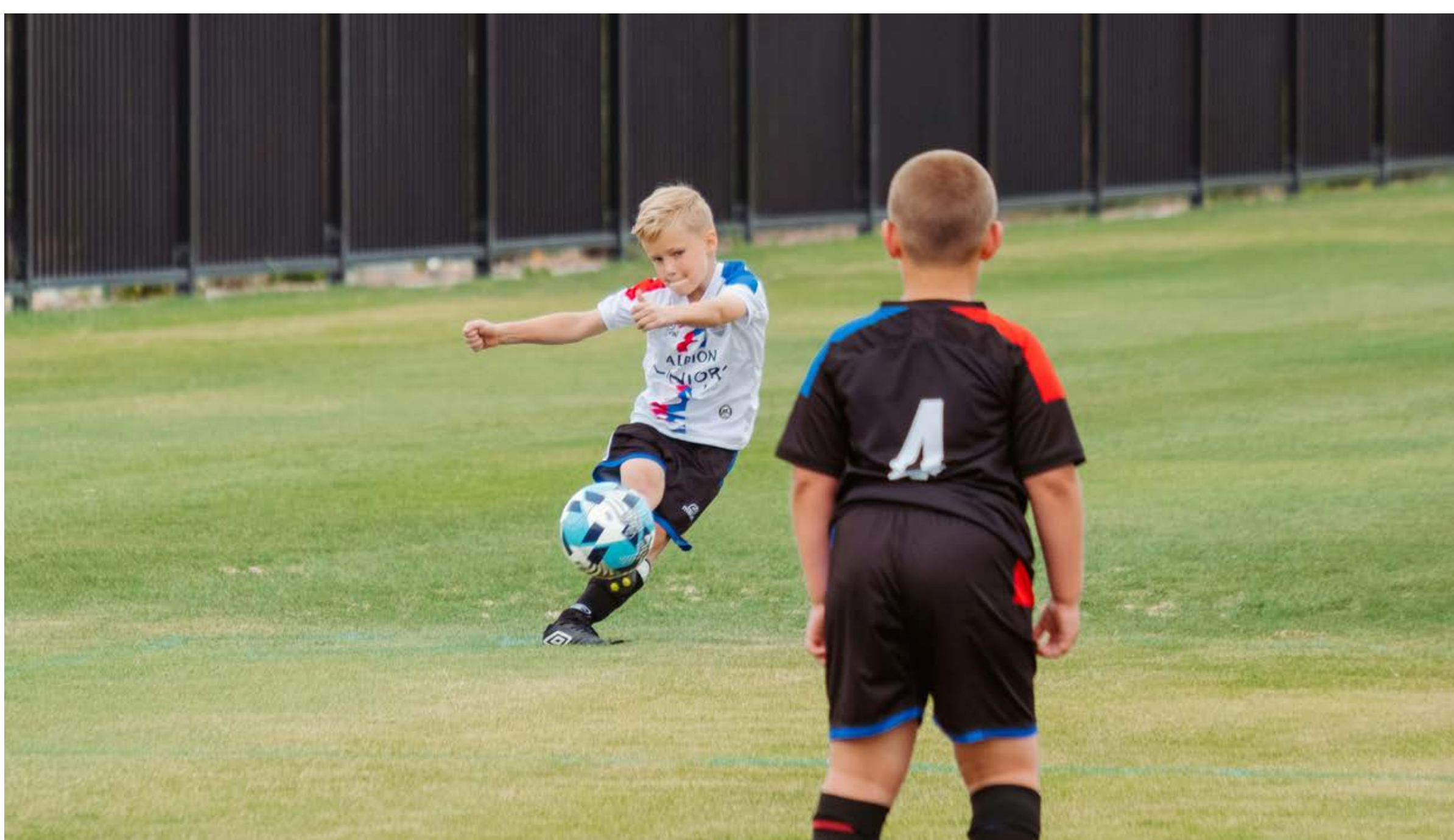
£500 per MW
value of annual community benefit



£20,000 pa
for the 40 year project lifespan

Tell us your ideas

What are your priorities for the local area? Where do you think this fund could do the most good? Please inform a member of the team or fill in one of our feedback forms.



If you have any comments or questions about any aspect of the project please talk to a member of the project team or visit our website.

