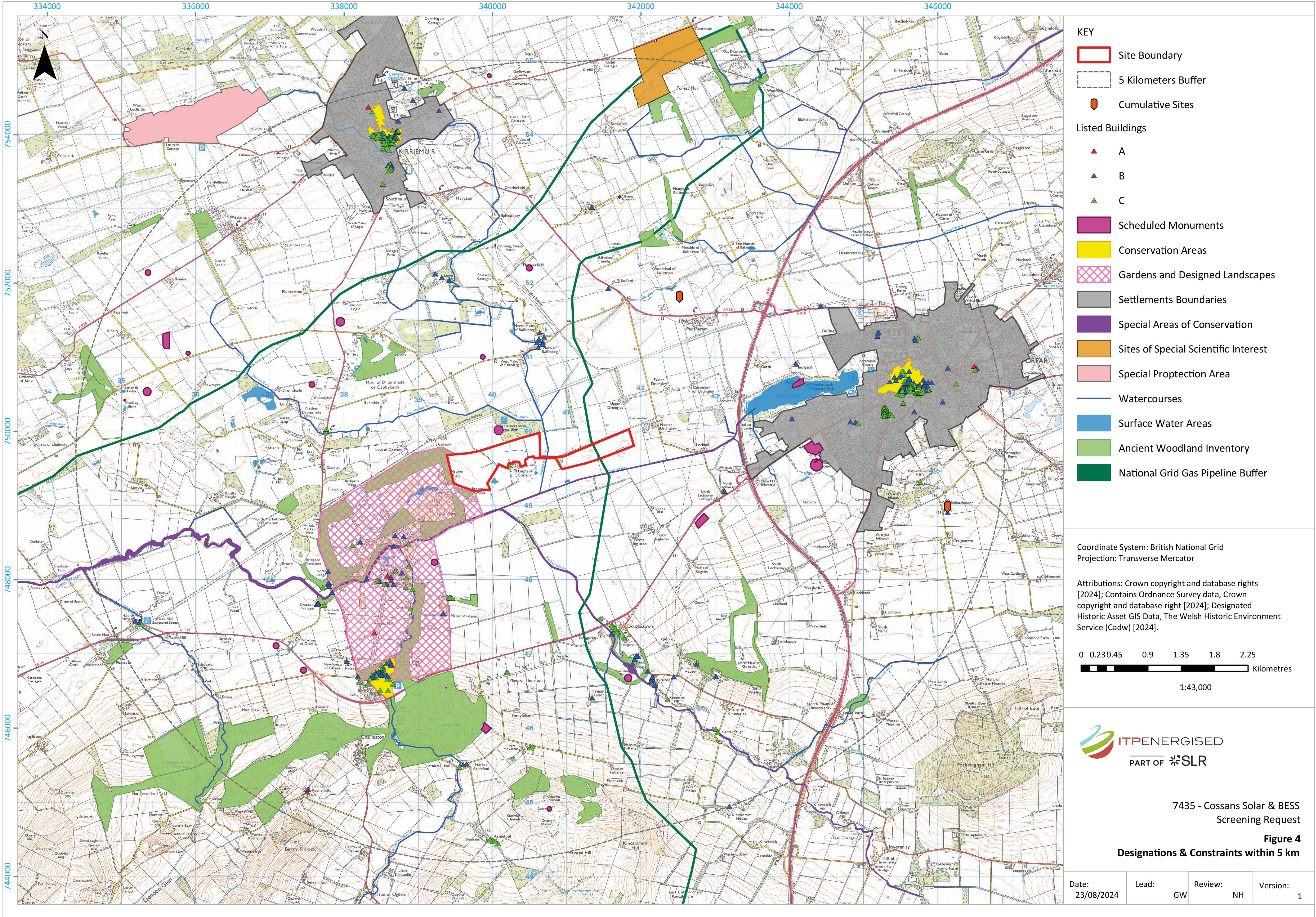




ENVIRONMENTAL ASSESSMENTS



The planning application for the Cossans Solar & BESS development will include a series of detailed environmental studies to evaluate the potential impacts of the development on the local area.

These assessments are designed to ensure that the project is planned in a way that is both environmentally responsible and in line with local and national guidelines. All of the environmental assessment work is still ongoing but many of the site surveys and visits have already been undertaken.



Ecology and Ornithology surveys
April 2024 - October 2024



Landscape and Visual site visit
September 2024 - October 2024



Archaeology and Cultural Heritage site visit
October 2024



Hydrology, Flood Risk and Drainage site survey
September 2024



Transport, Traffic and Access visit
September 2024



Noise baseline monitoring
October 2024